

**RESOLUTION ADOPTING THE WARD PLAN**

**FOR**

Town of Somerset

Resolution No. 2021-01

WHEREAS, every ten years the United States Census Bureau conducts a census of the populations and provides population counts to local municipalities; and

WHEREAS, the State of Wisconsin delivered detailed population data and block-level maps to St. Croix County on August 16, 2021; and

WHEREAS, Wisconsin Statutes sec. 59.10(3)(b) requires counties to prepare a tentative county supervisory district plan within 60 days of receiving the population data and block-level maps; and

WHEREAS, St. Croix County Board of Supervisors has held a public hearing and adopted a tentative supervisory district plan; and

WHEREAS, the tentative plan contains supervisory districts that are substantially equal in population; and

WHEREAS, copies of the plan have been provided to local municipalities; and

WHEREAS, St. Croix County has indicated the approximate location of the territory from which a ward is sought and the approximate population of the ward; and

WHEREAS, Wisconsin Statutes sec. 5.15 requires municipalities to divide into wards.

THEREFORE, BE IT RESOLVED that the Click or tap here to enter text. hereby adopts a ward boundary plan as described below:

<b>WARD #</b>	<b>POPULATION</b>	<b>COUNTY SUPERVISORY DISTRICT#</b>
1 & 2	4954	1
3, 4, 5, & 6	4869	2

Tab to add lines if needed

BE IT FURTHER RESOLVED that the ward boundaries are outlined and identified on the attached map, which is incorporated and made a part hereof, and that the map is generated using WISE-LR software in order to incorporate the underlying census block numbers within each ward.

BE IT FURTHER RESOLVED that the polling place(s) location for the wards shall be as follows:

<b>POLLING PLACE(S)</b>	<b>ADDRESS(ES)</b>
Somerset Town Hall	748 Hwy. 35, Somerset, WI 54025

Tab to add lines if needed

BE IT FURTHER RESOLVED that within five days of adoption or enactment of this resolution, the municipal clerk shall transmit one certified copy of the resolution and all attachments to the St. Croix County Clerk Cindy Campbell.

NEGATIVE

\_\_\_\_\_  
\_\_\_\_\_  
\_\_\_\_\_  
\_\_\_\_\_  
\_\_\_\_\_  
\_\_\_\_\_

AFFIRMATIVE

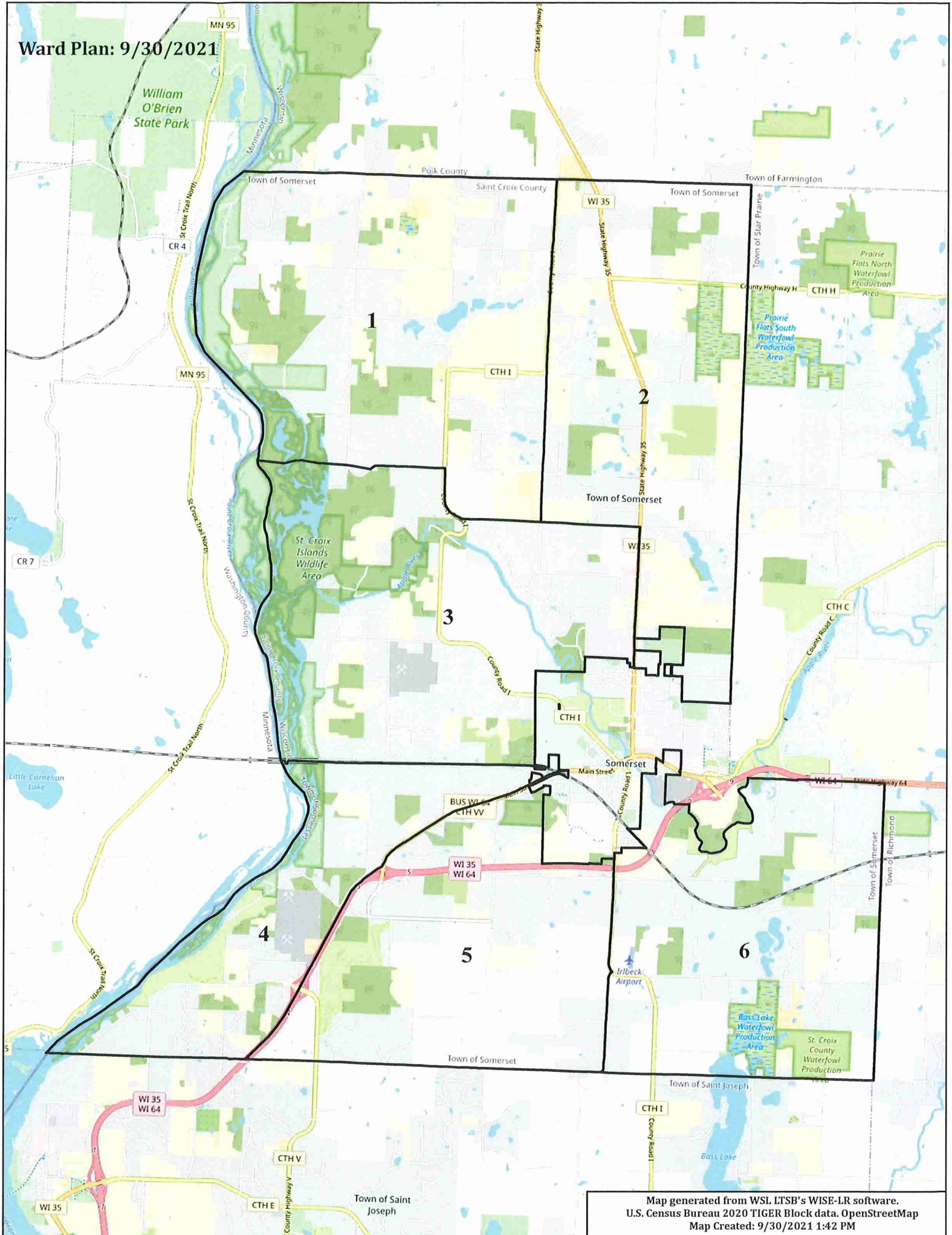
Jim Witzmann  
Steve M. Lemmly  
Ed Schachtner  
Douglas R. Bourne

I hereby certify this is a true and correct copy of the resolution passed by the Town Board of the Town of Somerset on October 6, 2021.

Attest:

Jeri Keester  
Municipal Clerk

Ward Plan: 9/30/2021



Map generated from WSL LTSB's WISE-LR software.  
U.S. Census Bureau 2020 TIGER Block data. OpenStreetMap  
Map Created: 9/30/2021 1:42 PM